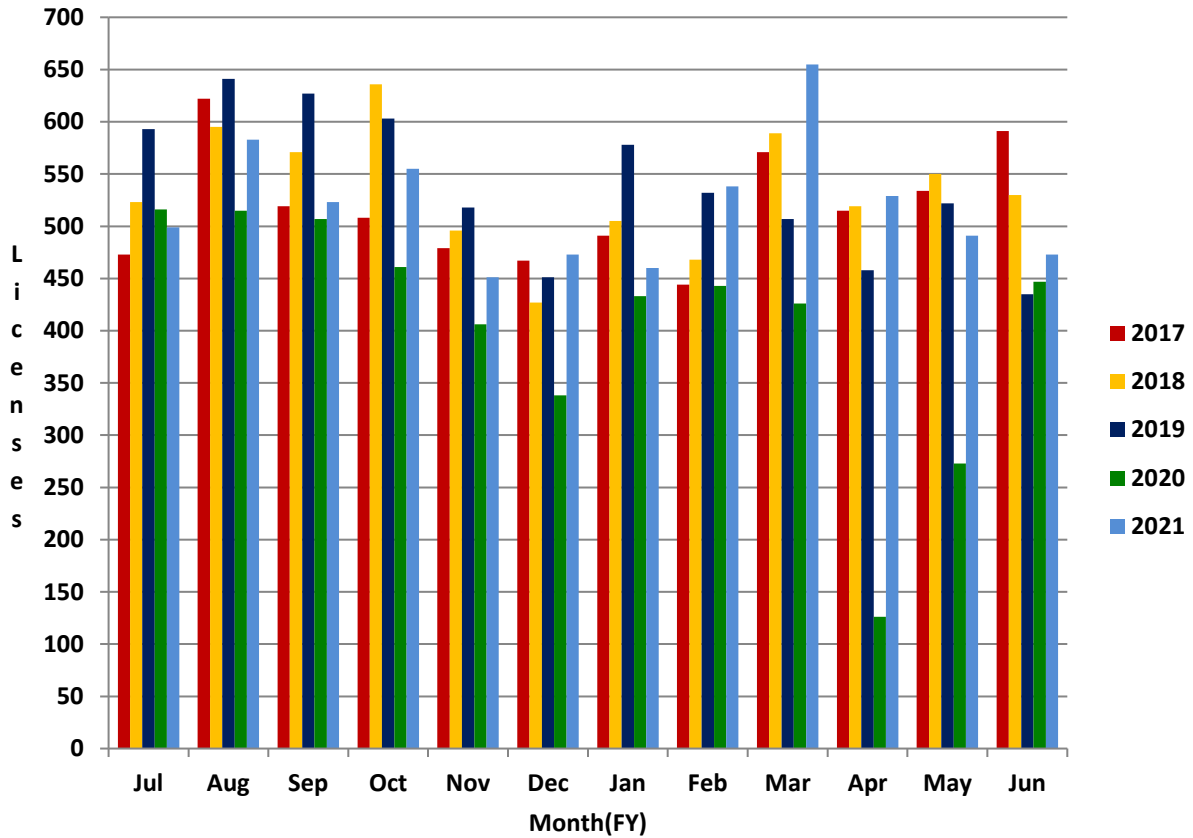




**Arizona Department of Real Estate  
Monthly Licensing Trends  
FY2017 – FY 2021**

### Salesperson Original Licenses



	Jul	Aug	Sep	Oct	Nov	Dec	Jan	Feb	Mar	Apr	May	Jun
2017	473	622	519	508	479	467	491	444	571	515	534	591
2018	523	595	571	636	496	427	505	468	589	519	550	530
2019	593	641	627	603	518	451	578	532	507	458	522	435
2020	516	515	507	461	406	338	433	443	426	126	273	447
2021	499	583	523	555	451	473	460	538	655	529	491	473