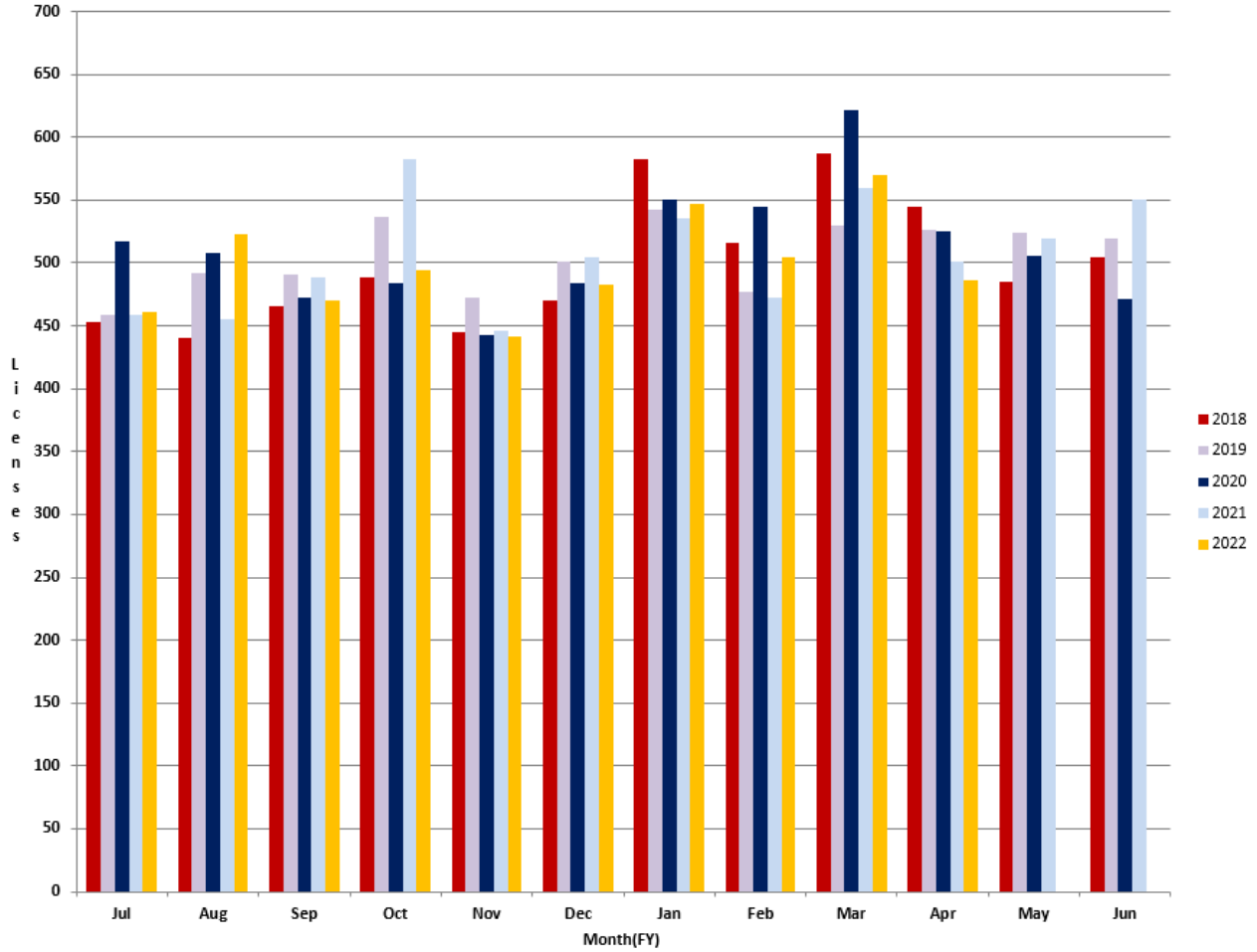




## Arizona Department of Real Estate Monthly Licensing Trends FY 2018 – FY2022

### Broker Renewal Licenses



	Jul	Aug	Sep	Oct	Nov	Dec	Jan	Feb	Mar	Apr	May	Jun
2018	453	440	465	488	445	470	583	516	587	545	485	504
2019	459	492	491	537	473	501	542	477	530	526	524	520
2020	517	508	472	484	443	484	550	545	621	525	506	471
2021	459	455	489	583	446	504	536	473	559	501	520	550
2022	461	523	470	494	442	483	547	504	570	486		