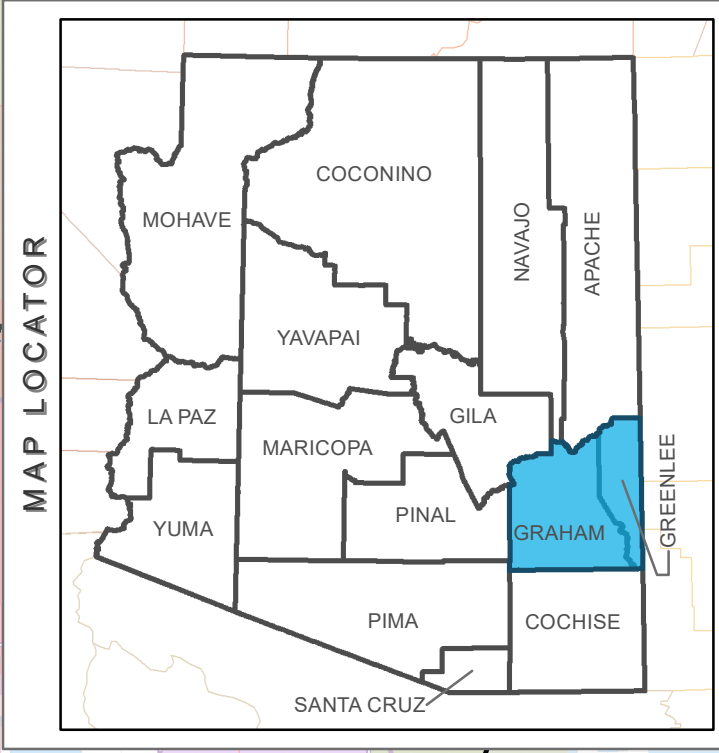
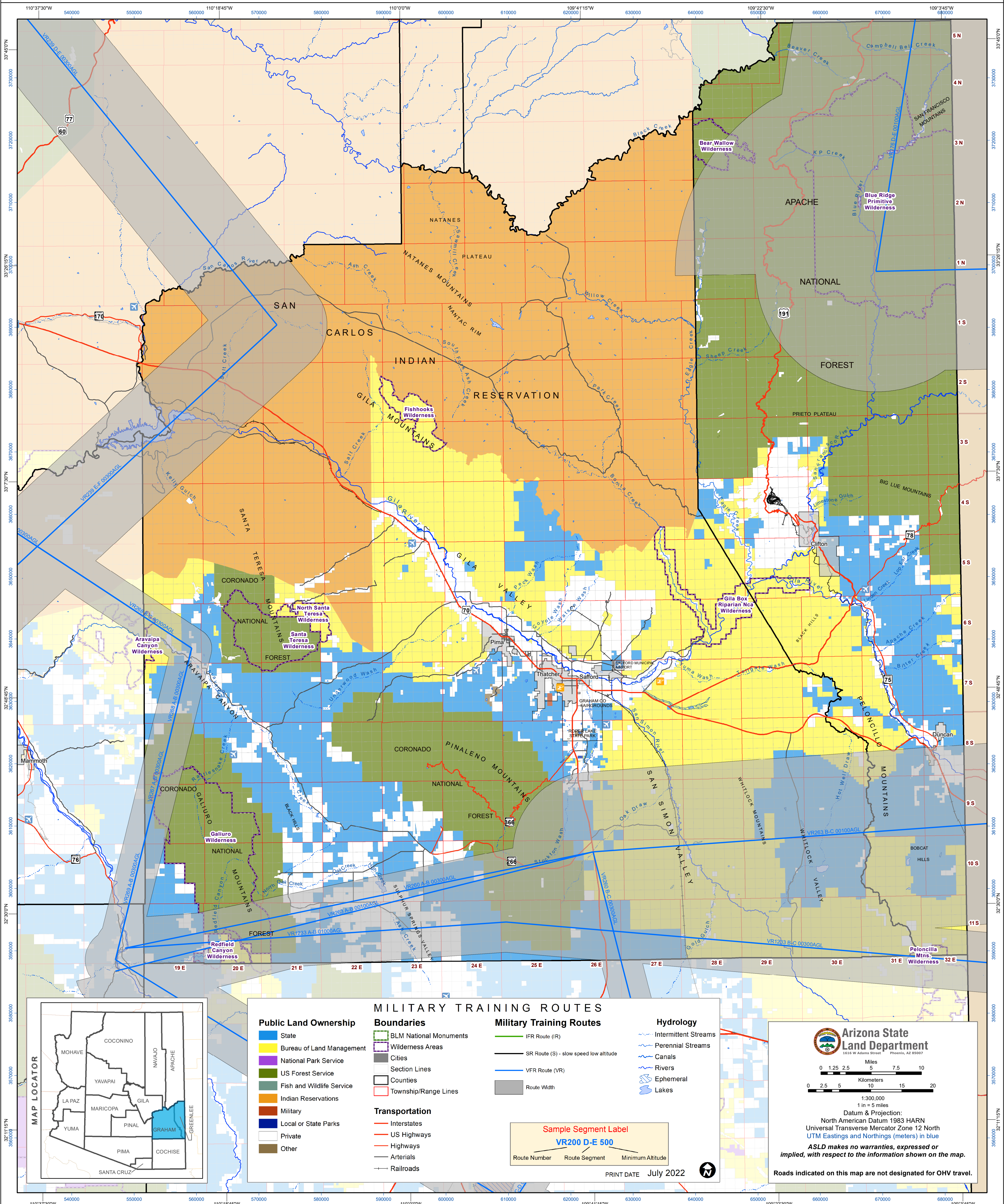


MILITARY TRAINING ROUTES / GRAHAM & GREENLEE COUNTY



MILITARY TRAINING ROUTES

<p>Public Land Ownership</p> <ul style="list-style-type: none"> State Bureau of Land Management National Park Service US Forest Service Fish and Wildlife Service Indian Reservations Military Local or State Parks Private Other 	<p>Boundaries</p> <ul style="list-style-type: none"> BLM National Monuments Wilderness Areas Cities Section Lines Counties Township/Range Lines <p>Transportation</p> <ul style="list-style-type: none"> Interstates US Highways Highways Arterials Railroads 	<p>Military Training Routes</p> <ul style="list-style-type: none"> IFR Route (IR) SR Route (S) - slow speed low altitude VFR Route (VR) Route Width 	<p>Hydrology</p> <ul style="list-style-type: none"> Intermittent Streams Perennial Streams Canals Rivers Ephemeral Lakes
--	--	--	--

Sample Segment Label

VR200 D-E 500

Route Number Route Segment Minimum Altitude

PRINT DATE July 2022

Arizona State Land Department
1616 W Adams Street Phoenix, AZ 85007

Miles: 0 1.25 2.5 5 7.5 10

Kilometers: 0 2.5 5 10 15 20

1:300,000
1 in = 5 miles

Datum & Projection:
North American Datum 1983 HARN
Universal Transverse Mercator Zone 12 North
UTM Eastings and Northings (meters) in blue

ASLD makes no warranties, expressed or implied, with respect to the information shown on the map.

Roads indicated on this map are not designated for OHV travel.