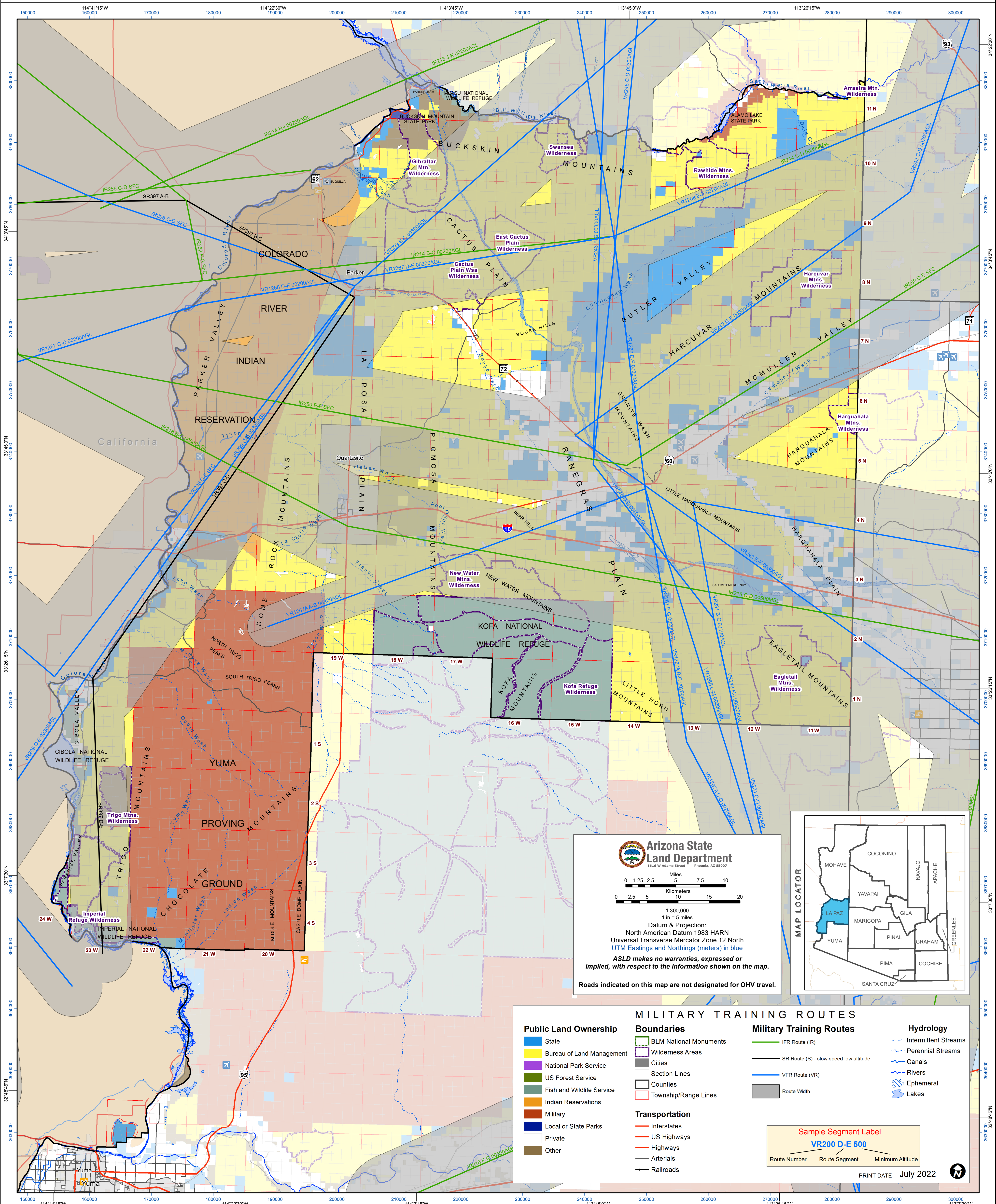


MILITARY TRAINING ROUTES / LA PAZ COUNTY



Arizona State Land Department
 1616 W Adams Street Phoenix, AZ 85007

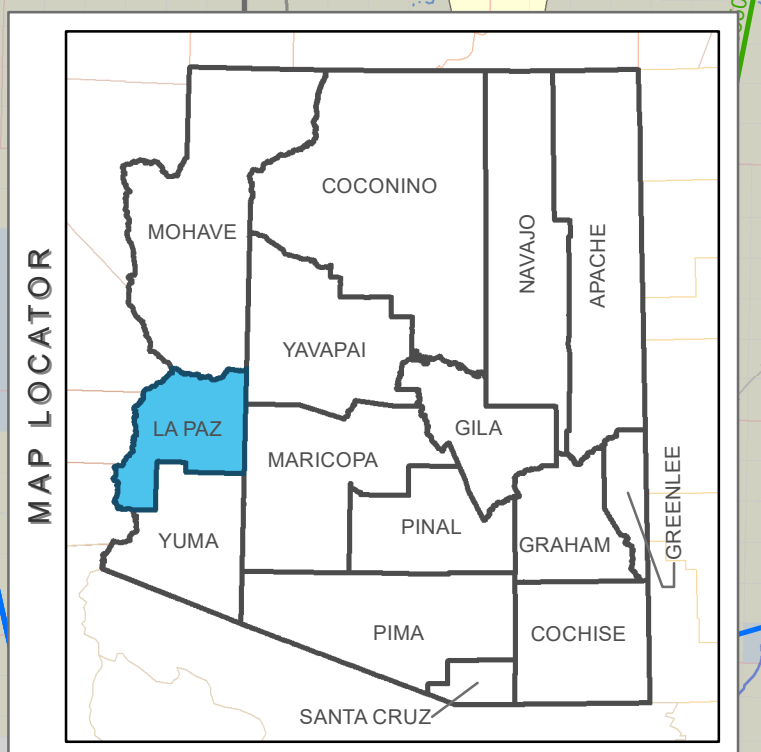
Miles: 0 1.25 2.5 5 7.5 10
 Kilometers: 0 2.5 5 10 15 20

1:300,000
 1 in = 5 miles

Datum & Projection:
 North American Datum 1983 HARN
 Universal Transverse Mercator Zone 12 North
 UTM Eastings and Northings (meters) in blue

ASLD makes no warranties, expressed or implied, with respect to the information shown on the map.

Roads indicated on this map are not designated for OHV travel.



MILITARY TRAINING ROUTES

Public Land Ownership	Boundaries	Military Training Routes	Hydrology
State	BLM National Monuments	IFR Route (IR)	Intermittent Streams
Bureau of Land Management	Wilderness Areas	SR Route (S) - slow speed low altitude	Perennial Streams
National Park Service	Cities	VFR Route (VR)	Canals
US Forest Service	Section Lines	Route Width	Rivers
Fish and Wildlife Service	Counties		Ephemeral
Indian Reservations	Township/Range Lines		Lakes
Military			
Local or State Parks			
Private			
Other			
	Transportation		
	Interstates		
	US Highways		
	Highways		
	Arterials		
	Railroads		

Sample Segment Label
 VR200 D-E 500
 Route Number Route Segment Minimum Altitude

PRINT DATE July 2022