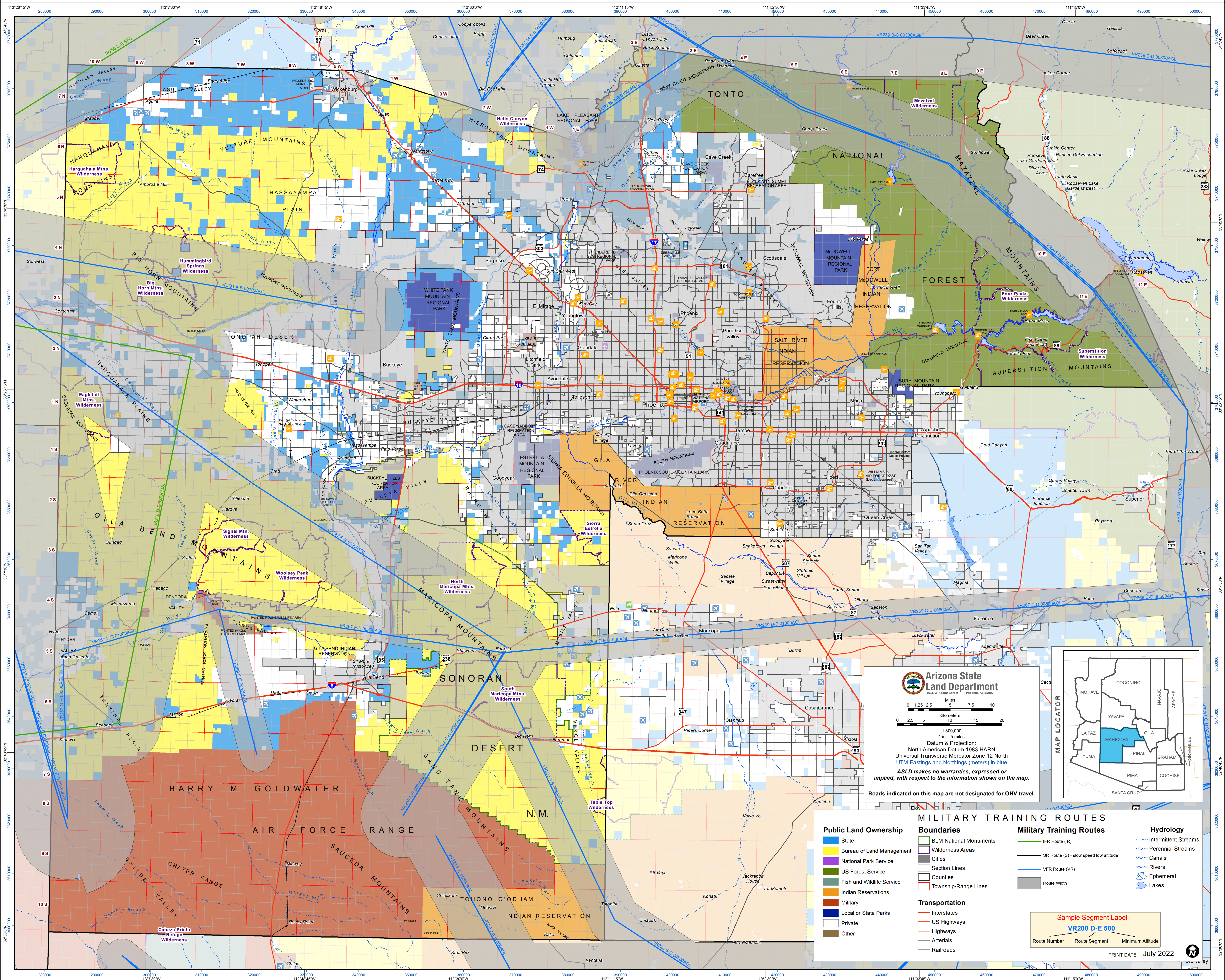


# MILITARY TRAINING ROUTES / MARICOPA COUNTY

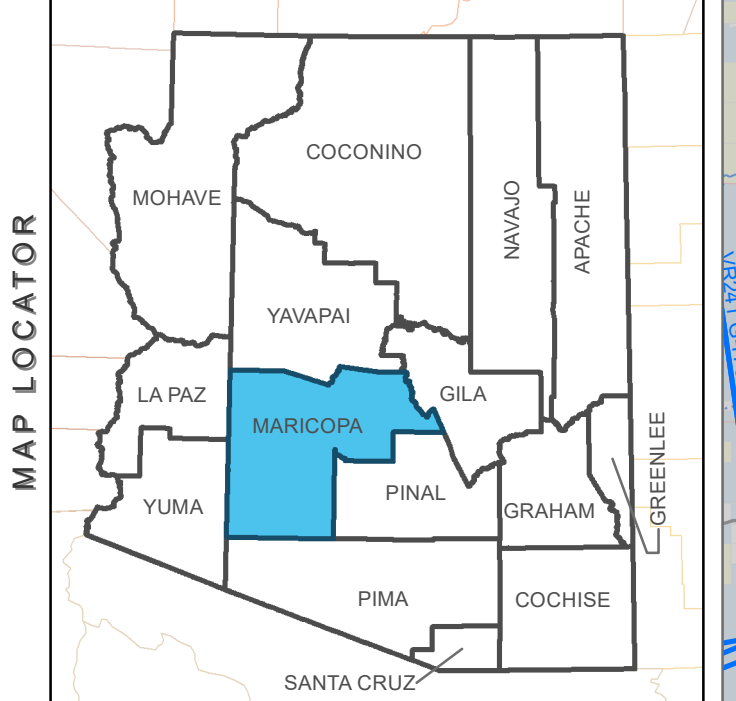


**Arizona State Land Department**  
 1616 W Adams Street, Phoenix, AZ 85007

0 1.25 2.5 5 7.5 10  
 Miles  
 0 2.5 5 10 15 20  
 Kilometers

1:300,000  
 1 in = 5 miles  
 Datum & Projection:  
 North American Datum 1983 HARN  
 Universal Transverse Mercator Zone 12 North  
 UTM Eastings and Northings (meters) in blue  
**ASLD makes no warranties, expressed or implied, with respect to the information shown on the map.**

Roads indicated on this map are not designated for OHV travel.



Public Land Ownership	Boundaries	Military Training Routes	Hydrology
State	BLM National Monuments	IFR Route (IFR)	Intermittent Streams
Bureau of Land Management	Wilderness Areas	SR Route (S) - slow speed low altitude	Perennial Streams
National Park Service	Cities	VFR Route (VFR)	Canals
US Forest Service	Section Lines	Route Width	Rivers
Fish and Wildlife Service	Counties		Ephemeral
Indian Reservations	Township/Range Lines		Lakes
Military			
Local or State Parks			
Private			
Highways			
Arterials			
Railroads			

Sample Segment Label  
**VR200 D-E 500**  
 Route Number Route Segment Minimum Altitude

PRINT DATE July 2022