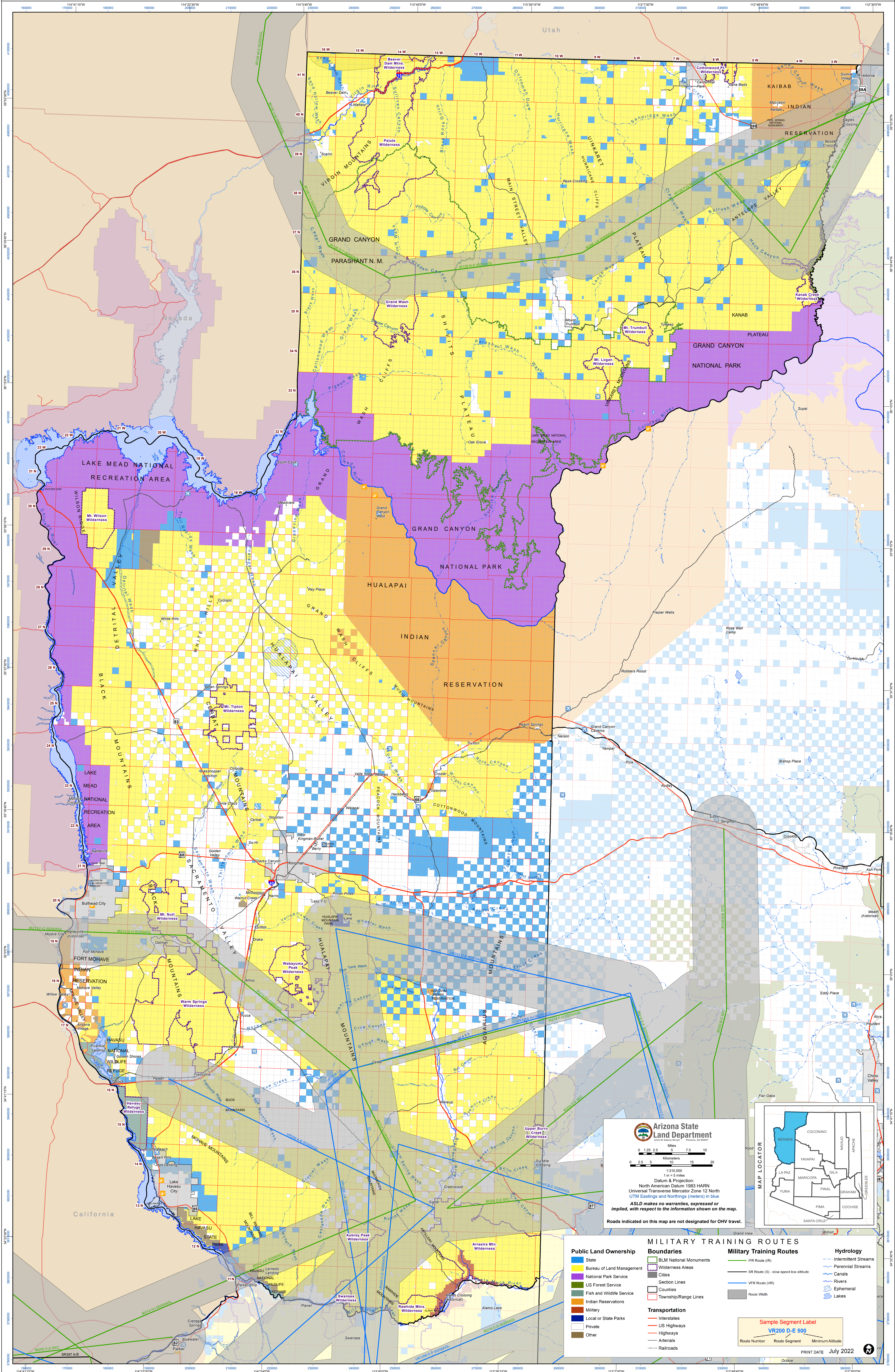


MILITARY TRAINING ROUTES / MOHAVE COUNTY



Arizona State Land Department
 1 in = 5 miles
 Datum & Projection:
 North American Datum 1983 HARN
 Universal Transverse Mercator Zone 12 North
 UTM Eastings and Northings (meters) in blue
 ASDL makes no warranties, expressed or implied, with respect to the information shown on the map.
 Roads indicated on this map are not designated for OHV travel.

MAP LOCATOR

MILITARY TRAINING ROUTES

<p>Public Land Ownership</p> <ul style="list-style-type: none"> State Bureau of Land Management National Park Service US Forest Service Fish and Wildlife Service Indian Reservations Military Local or State Parks Private Other 	<p>Boundaries</p> <ul style="list-style-type: none"> BLM National Monuments Wilderness Areas Cities Section Lines Counties Township/Range Lines <p>Transportation</p> <ul style="list-style-type: none"> Interstates US Highways Highways Arterials Railroads 	<p>Military Training Routes</p> <ul style="list-style-type: none"> IFR Route (IR) IFR Route (SR) - slow speed low altitude VFR Route (VR) Route Width 	<p>Hydrology</p> <ul style="list-style-type: none"> Intermittent Streams Perennial Streams Canals Rivers Ephemeral Lakes
--	--	--	---

Sample Segment Label
 VR200 D-E 500
 Route Number Route Segment Minimum Altitude

PRINT DATE July 2022