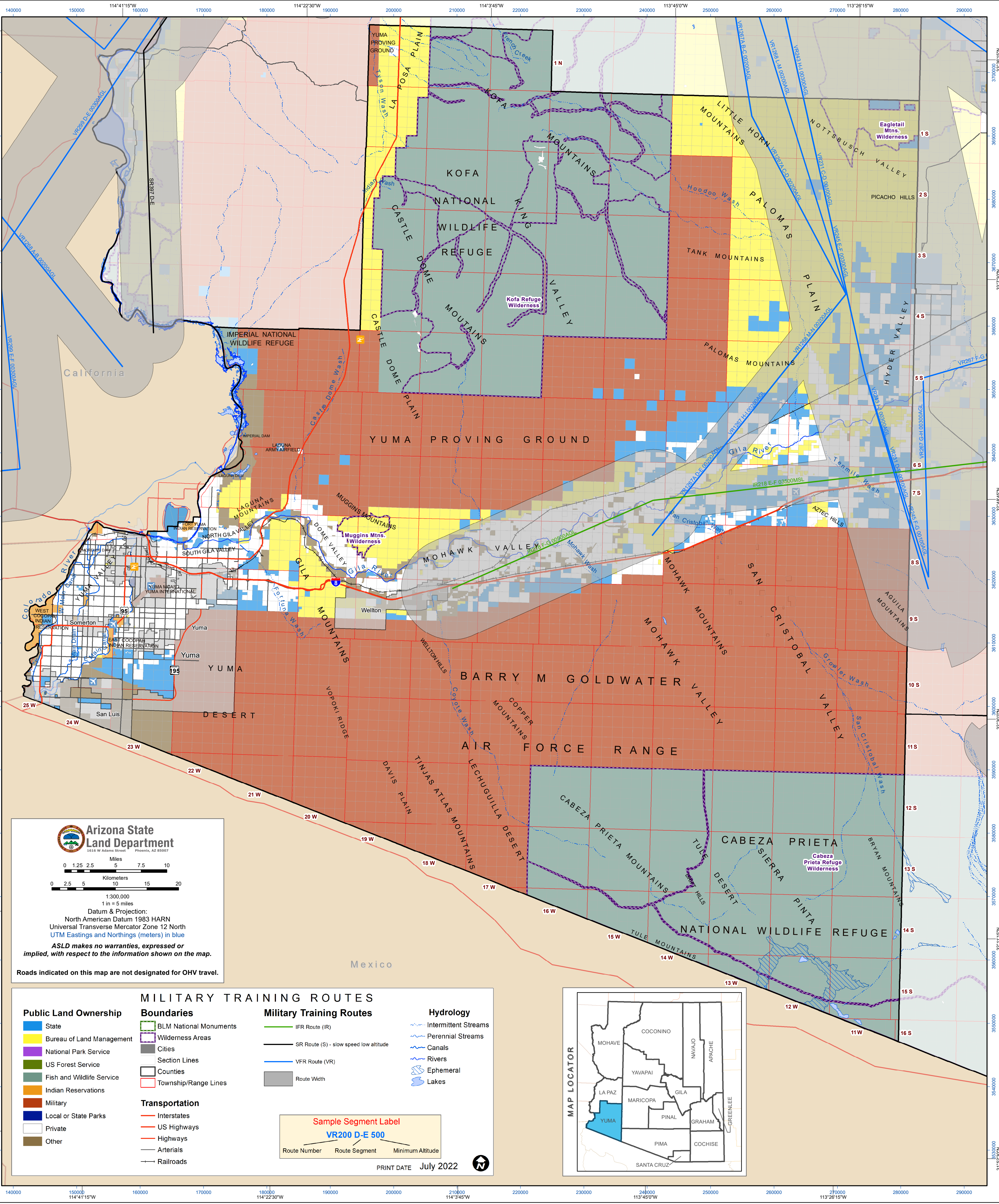
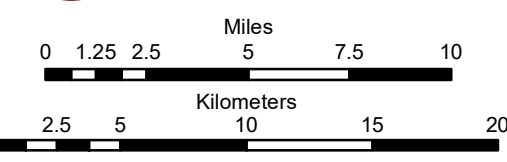


MILITARY TRAINING ROUTES / YUMA COUNTY



Arizona State Land Department
 1616 W Adams Street
 Phoenix, AZ 85007

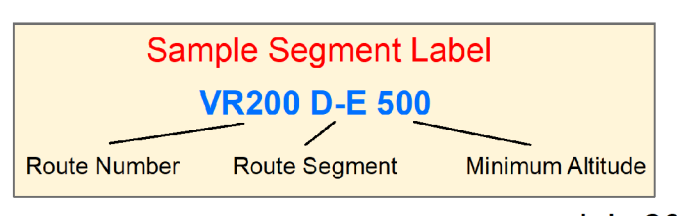


Datum & Projection:
 North American Datum 1983 HARN
 Universal Transverse Mercator Zone 12 North
 UTM Eastings and Northings (meters) in blue

ASLD makes no warranties, expressed or implied, with respect to the information shown on the map.

Roads indicated on this map are not designated for OHV travel.

MILITARY TRAINING ROUTES		
Public Land Ownership	Boundaries	Military Training Routes
State	BLM National Monuments	IFR Route (IR)
Bureau of Land Management	Wilderness Areas	SR Route (S) - slow speed low altitude
National Park Service	Cities	VFR Route (VR)
US Forest Service	Section Lines	Route Width
Fish and Wildlife Service	Counties	
Indian Reservations	Township/Range Lines	
Military		
Local or State Parks		
Private		
Other		
	Transportation	
	Interstates	
	US Highways	
	Highways	
	Arterials	
	Railroads	
		Hydrology
		Intermittent Streams
		Perennial Streams
		Canals
		Rivers
		Ephemeral
		Lakes



PRINT DATE July 2022

