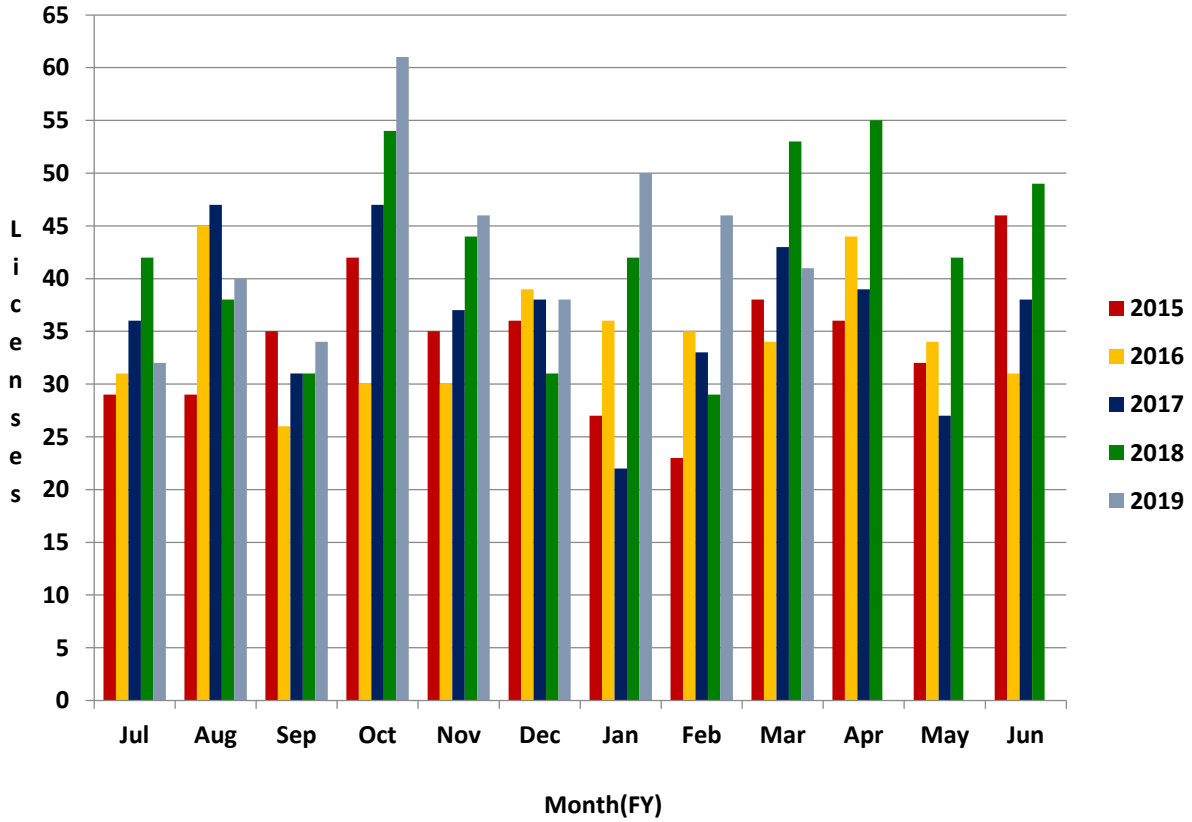




**Arizona Department of Real Estate  
Monthly Licensing Trends  
FY2015 – FY 2019**

**Broker Original Licenses**



	Jul	Aug	Sep	Oct	Nov	Dec	Jan	Feb	Mar	Apr	May	Jun
2015	29	29	35	42	35	36	27	23	38	36	32	46
2016	31	45	26	30	30	39	36	35	34	44	34	31
2017	36	47	31	47	37	38	22	33	43	39	27	38
2018	42	38	31	54	44	31	42	29	53	55	42	49
2019	32	40	34	61	46	38	50	46	41			