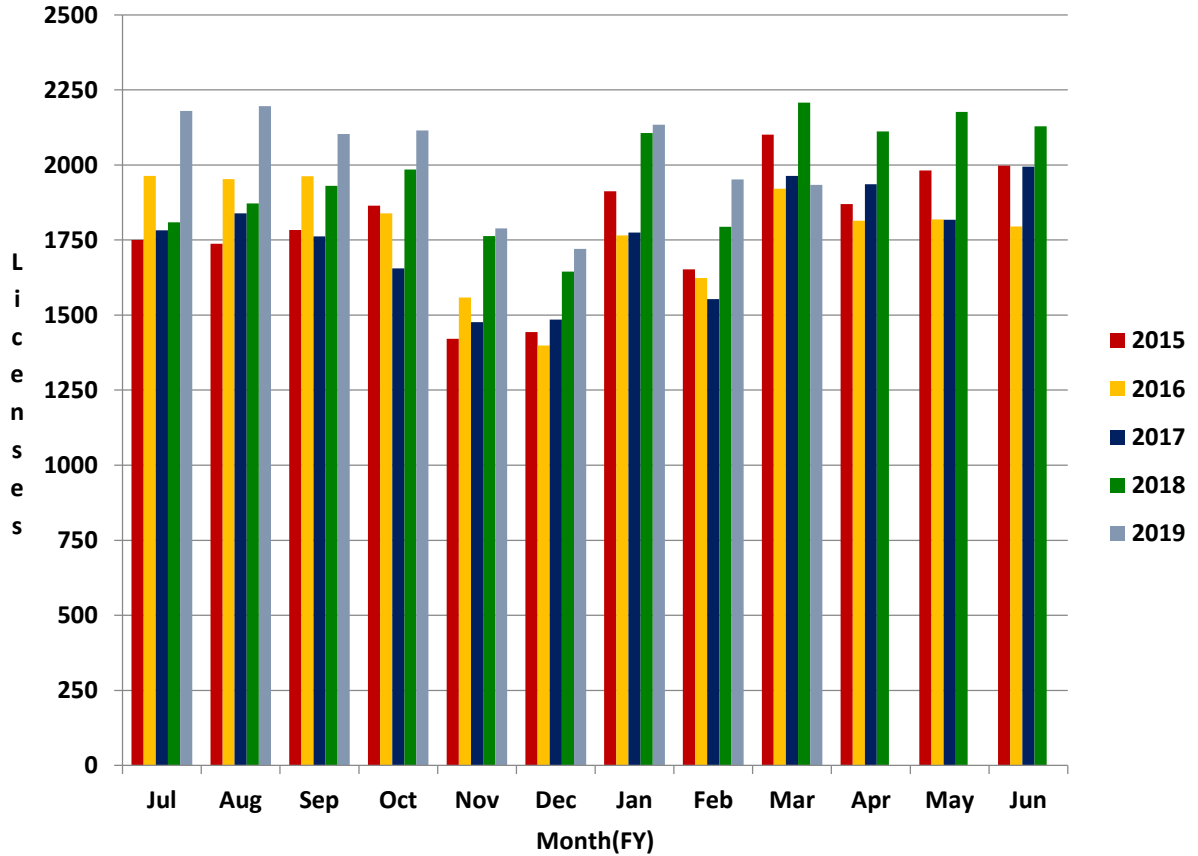




**Arizona Department of Real Estate  
Monthly Licensing Trends  
FY2015 – FY 2019**

**Salesperson Renewal Licenses**



	Jul	Aug	Sep	Oct	Nov	Dec	Jan	Feb	Mar	Apr	May	Jun
2015	1750	1738	1783	1864	1421	1443	1912	1652	2101	1870	1982	1998
2016	1964	1953	1962	1839	1558	1399	1765	1624	1921	1814	1819	1795
2017	1782	1839	1762	1655	1476	1485	1775	1553	1964	1936	1818	1994
2018	1809	1872	1930	1985	1763	1645	2106	1794	2208	2112	2177	2129
2019	2180	2196	2103	2115	1789	1721	2134	1952	1934			