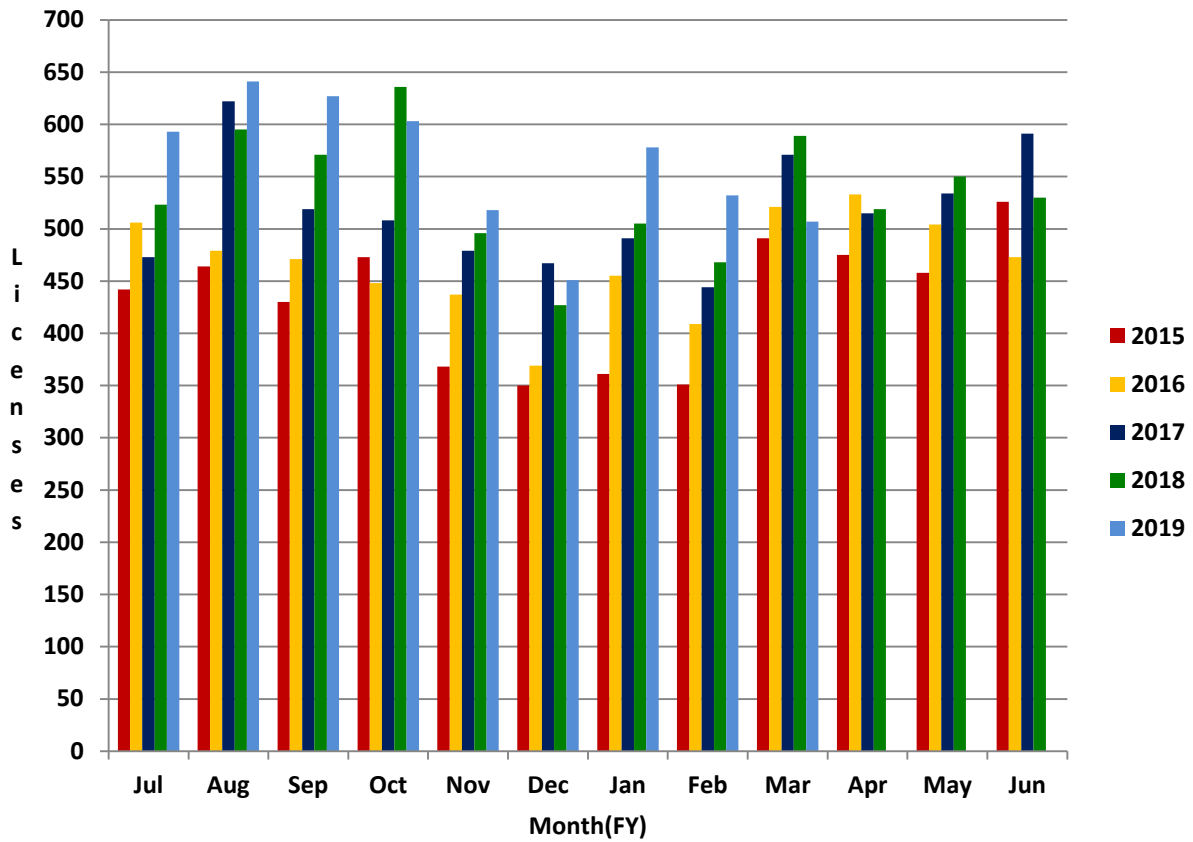




**Arizona Department of Real Estate
Monthly Licensing Trends
FY2015 – FY 2019**

Salesperson Original Licenses



	Jul	Aug	Sep	Oct	Nov	Dec	Jan	Feb	Mar	Apr	May	Jun
2015	442	464	430	473	368	350	361	351	491	475	458	526
2016	506	479	471	448	437	369	455	409	521	533	504	473
2017	473	622	519	508	479	467	491	444	571	515	534	591
2018	523	595	571	636	496	427	505	468	589	519	550	530
2019	593	641	627	603	518	451	578	532	507			